

LILANZ 利郎

2009

2010 3

The information contained in this presentation is intended solely for your personal reference. Such information is subject to change without notice, its accuracy is not guaranteed and it may not contain all material information concerning China Lilang Limited (the "Company"). The Company makes no representation regarding, and assumes no responsibility or liability for, the accuracy or completeness of, or any errors or omissions in, any information contained herein.

In addition, the information contains projections and forward-looking statements that reflect the Company's current views with respect to future events and financial performance. These views are based on current assumptions which are subject to various risks and which may change over time. No assurance can be given that future events will occur, that projections will be achieved, or that the Company's assumptions are correct. It is not the intention to provide, and you may not rely on this presentation as providing, a complete or comprehensive analysis of the Company's financial or trading position or prospects.

This presentation does not constitute an offer or invitation to purchase or subscribe for any securities or financial instruments or to provide any investment service or investment advice, and no part of it shall form the basis of or be relied upon in connection with any contract, commitment or investment decision in relation thereto.

1.

2.

3.

4.



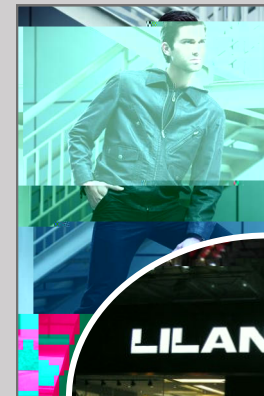
37.4% **15.6**

96.6% **3.03**

11

54 **2,561**

9 **10.8** **(1.4**
)



1.

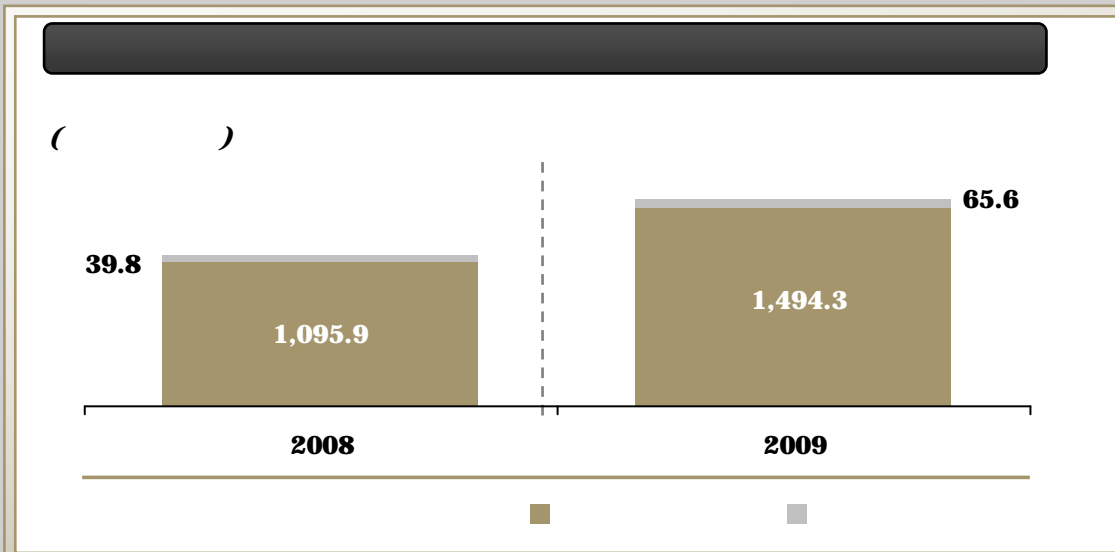
2.

3.

4.

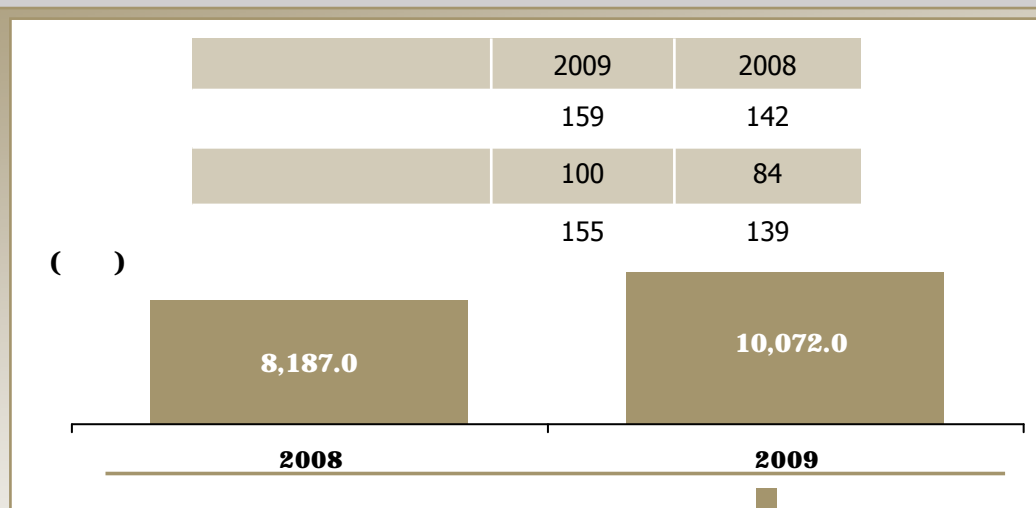


()	12 31 12		
	2009	2008	
	1,559,874	1,135,684	+37.4%
	551,136	344,057	+60.2%
	35.3%	30.3%	+5.0ppt
	338,796	171,044	+98.1%
	21.7%	15.1%	+6.6ppt
(EBITDA)	332,409	159,493	+108.4%
	302,994	154,132	+96.6%
	19.4%	13.6%	+5.8ppt
()	30.87	17.13	+80.2%
	11	N/A	N/A

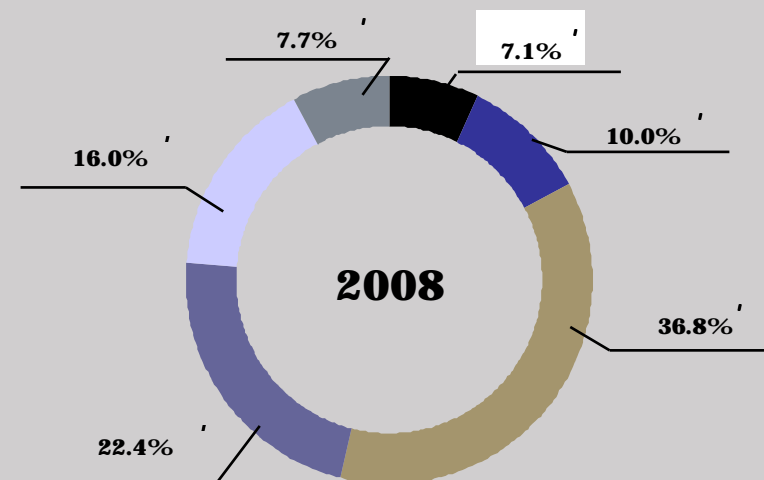
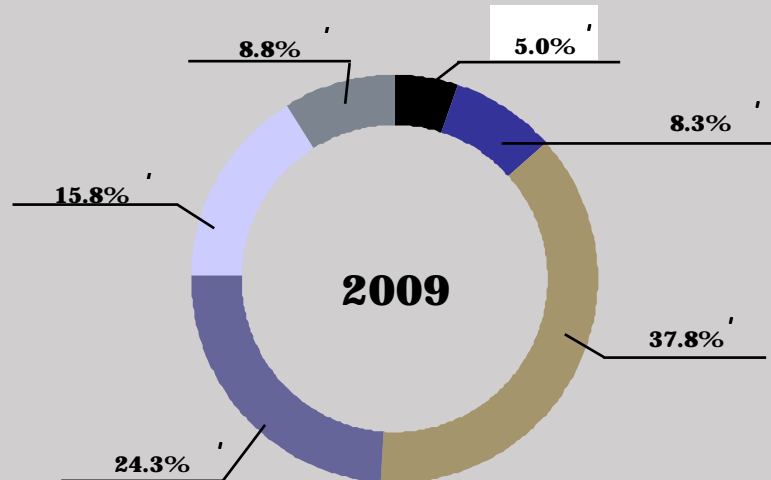


- **36.4%** **64.8%**

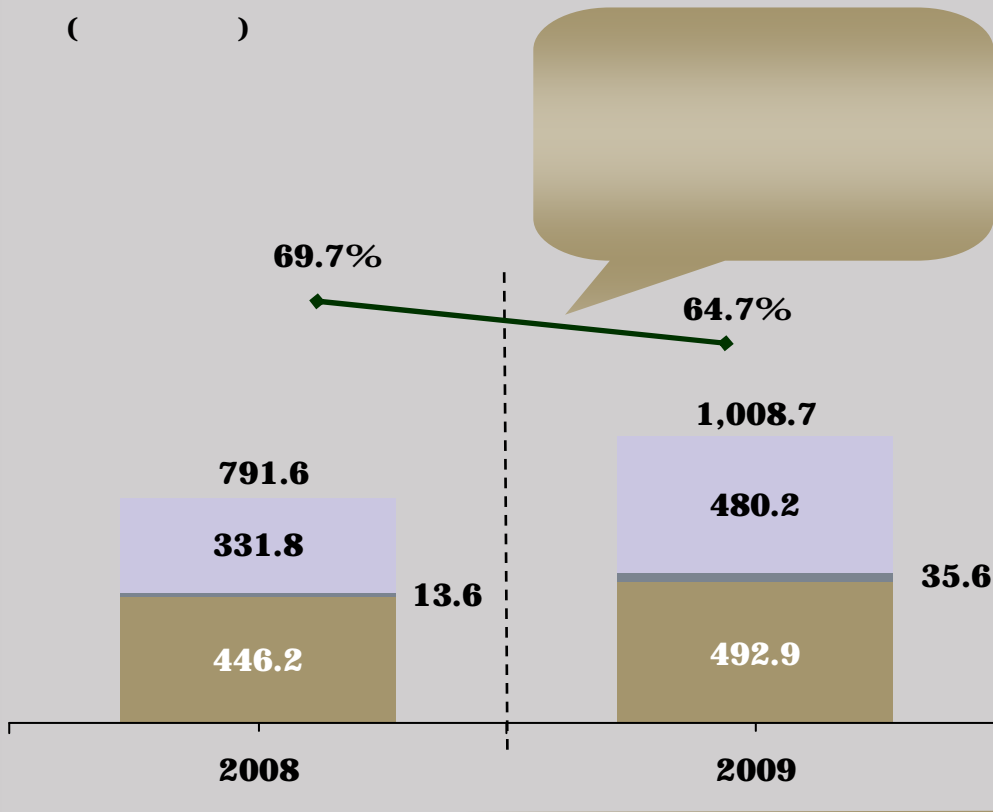
-
- **11.5%**



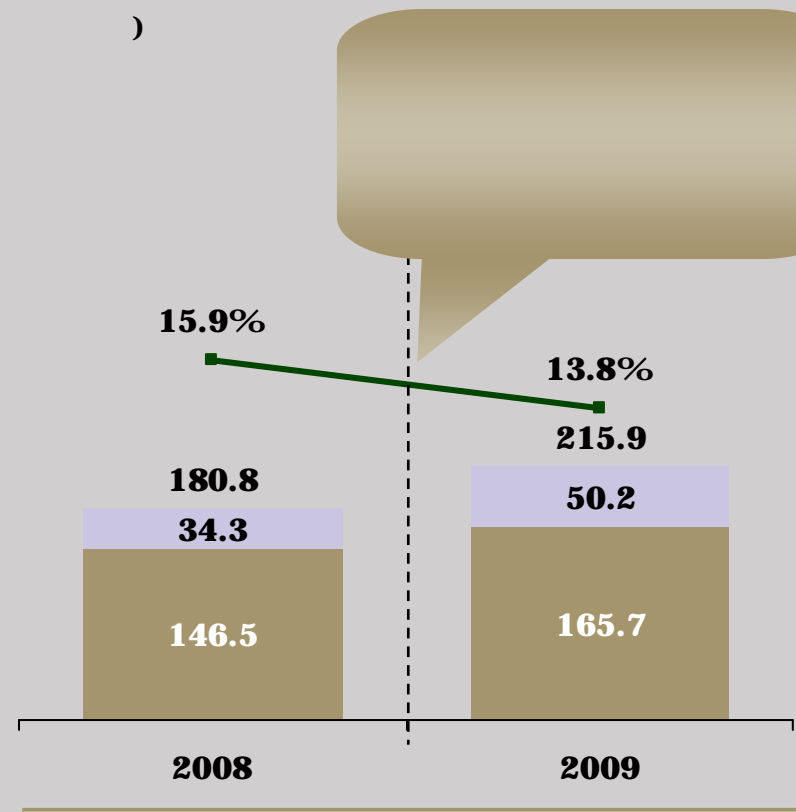
	2009		2008	
	()	%	()	%
	77.9	5.0	80.5	7.1
	129.2	8.3	114.2	10.0
	589.9	37.8	417.6	36.8
	378.4	24.3	254.9	22.4
	247.1	15.8	181.2	16.0
	137.4	8.8	87.3	7.7
:	1,559.9	100.0	1,135.7	100.0



()

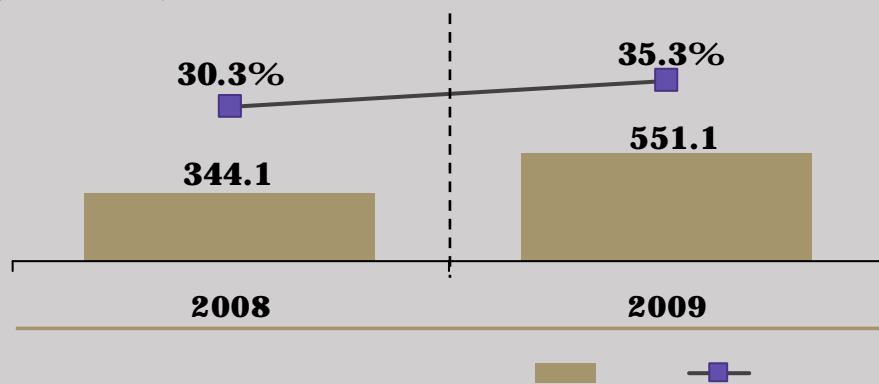


()

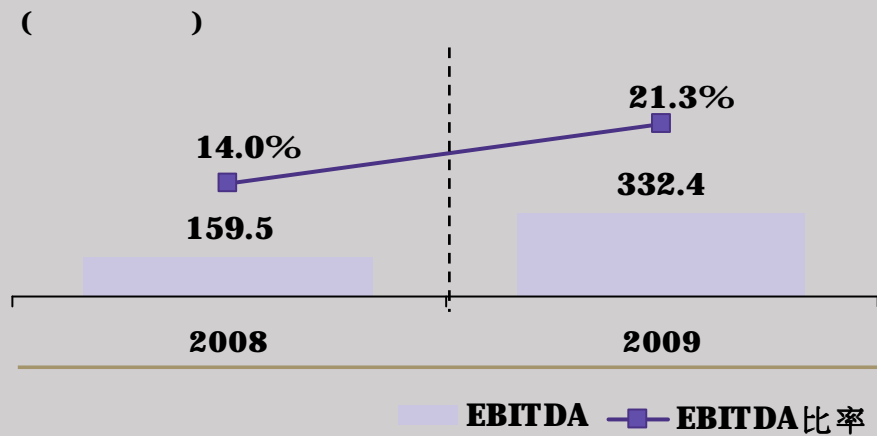


■ ■ ■ %

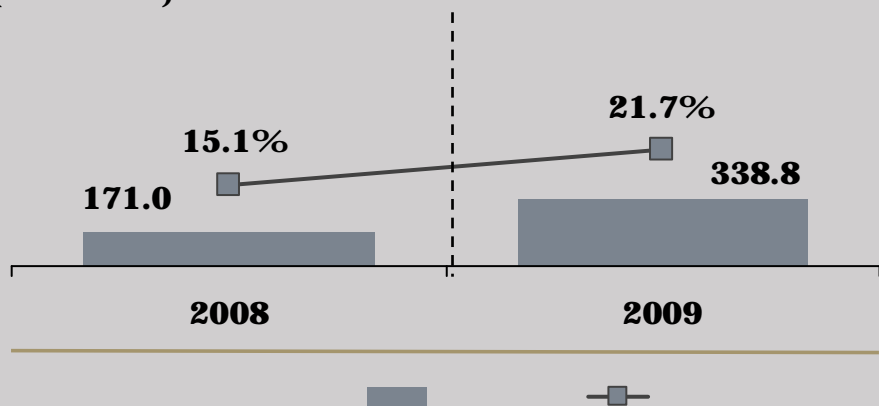
()



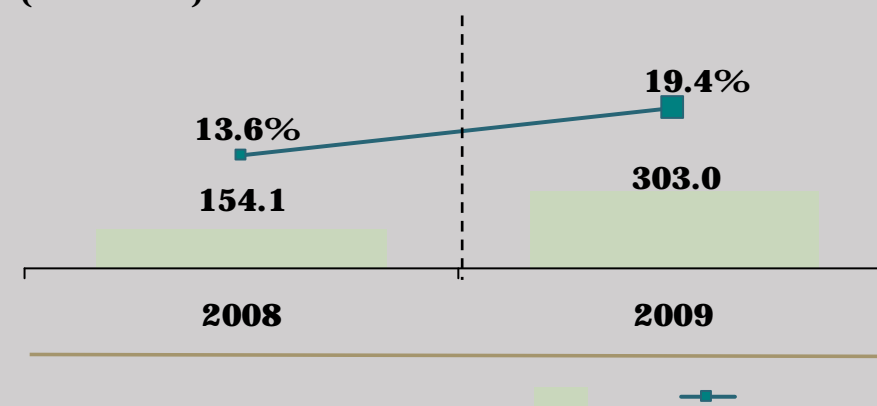
EBITDA EBITDA



()



()



(1)

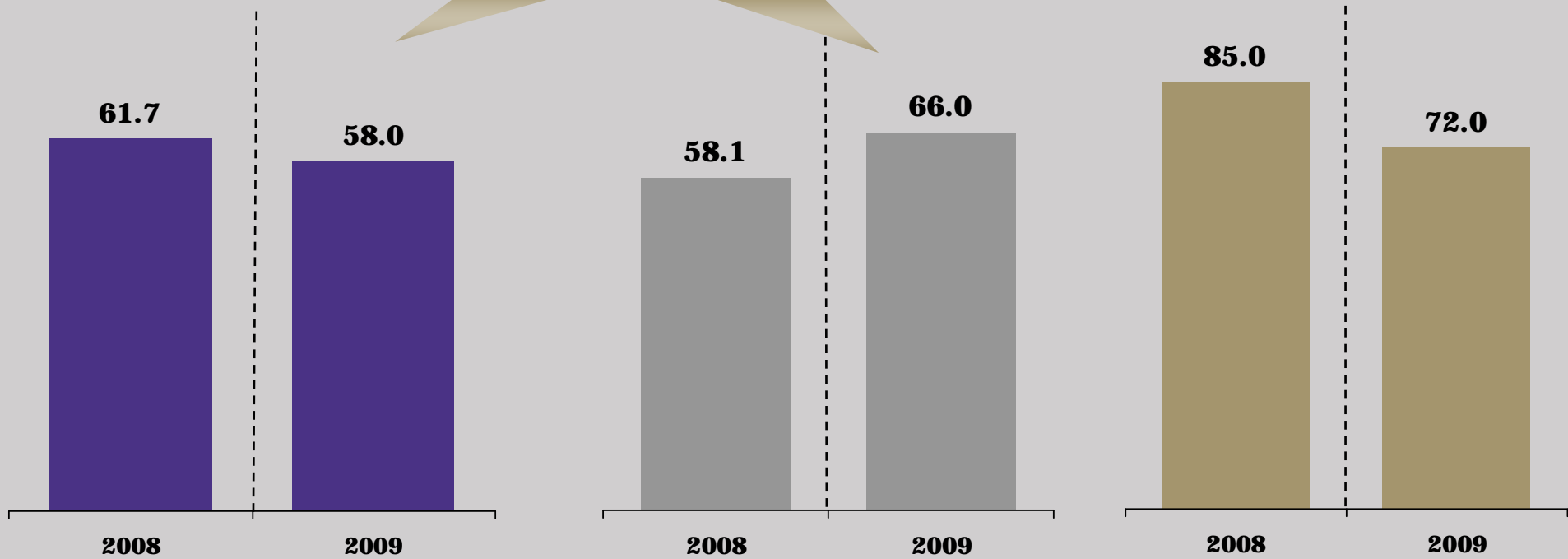
(2)

(3)

()

()

()

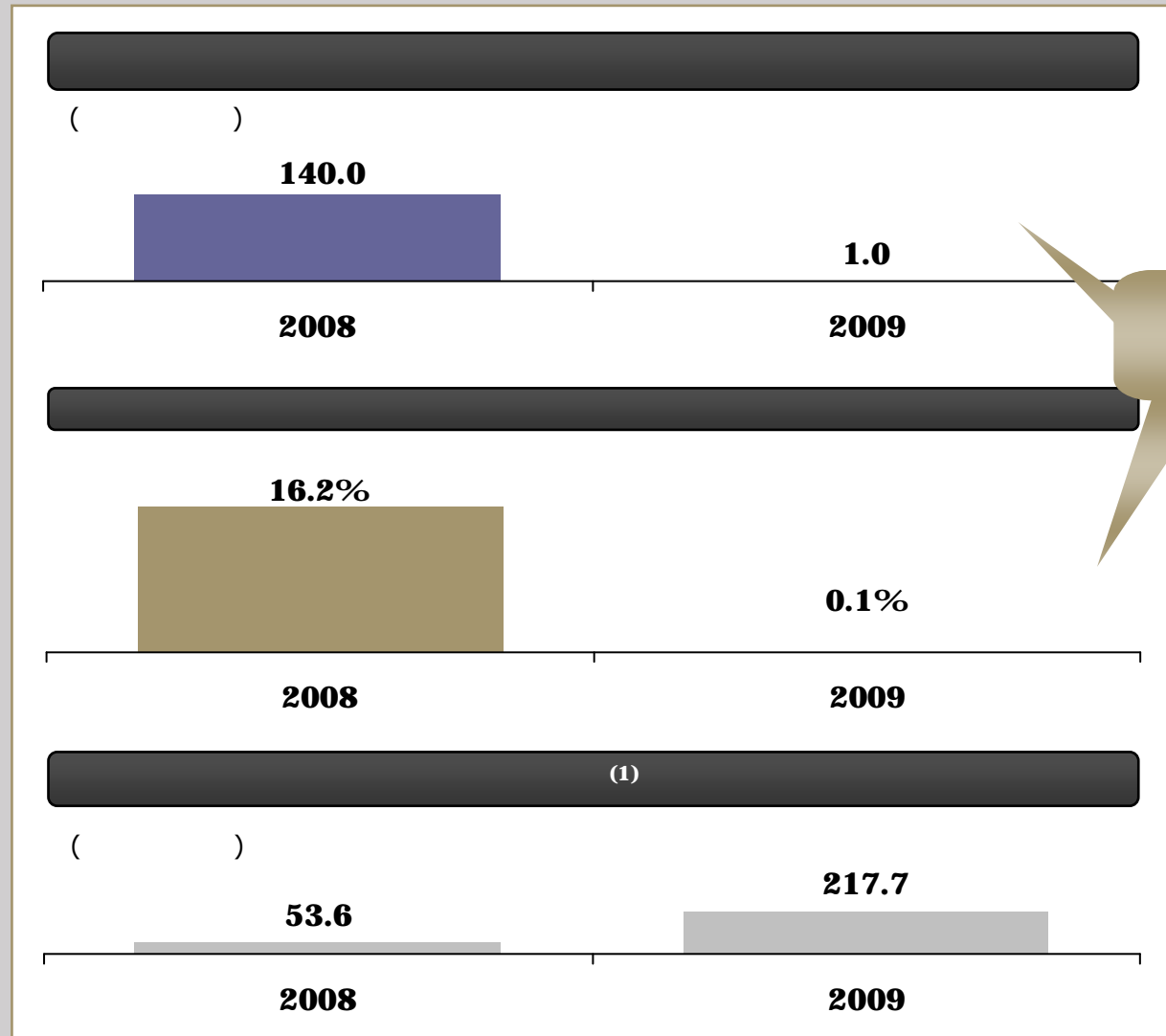


(1)
(2)
(3)

365

365

365



(1)

9.685

11.862

()	%			
	15%	162.2	0.3	161.9
(L2)	15%	162.2	4.4	157.8
	15%	162.2	-	162.2
	20%	216.3	-	216.3
	5%	54.1	-	54.1
	10%	108.1	-	108.1
	10%	108.1	108.1	-
	10%	108.1	-	108.1
	100%	1,081.3	112.8	968.5

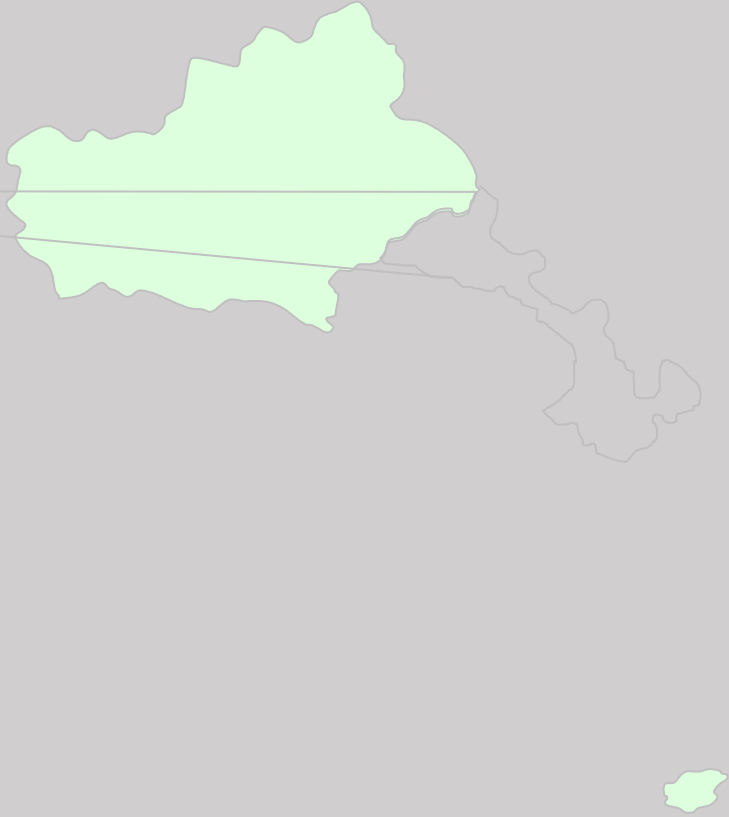


1.

2.

3.

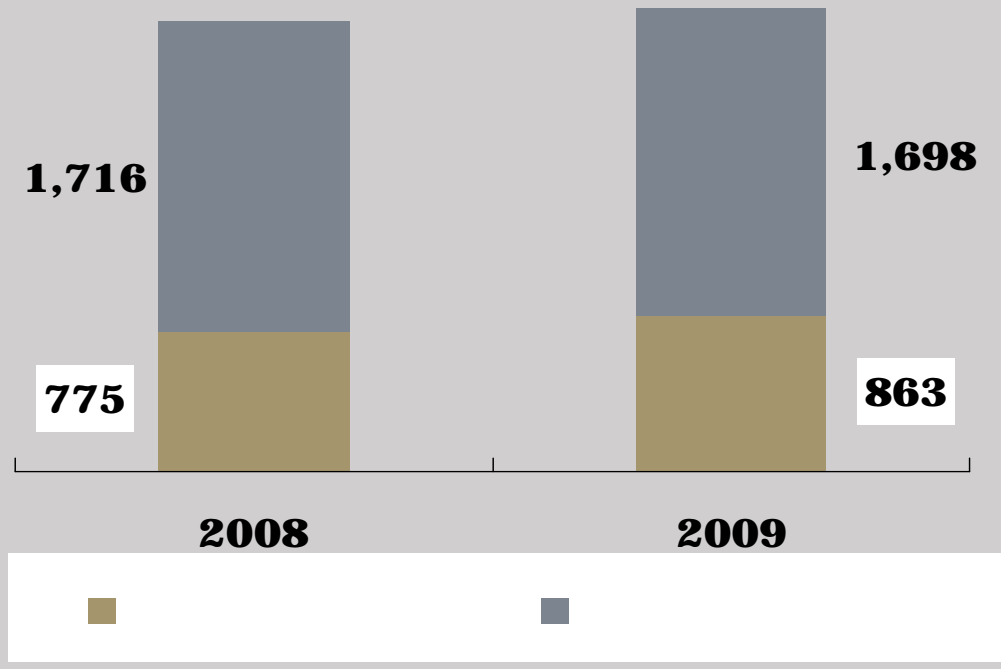
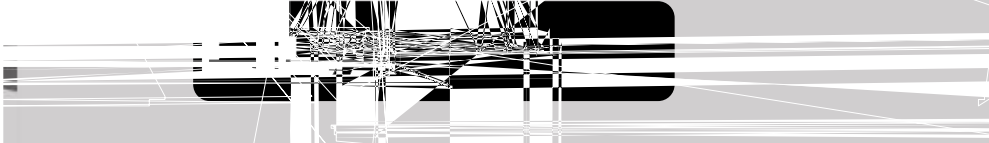
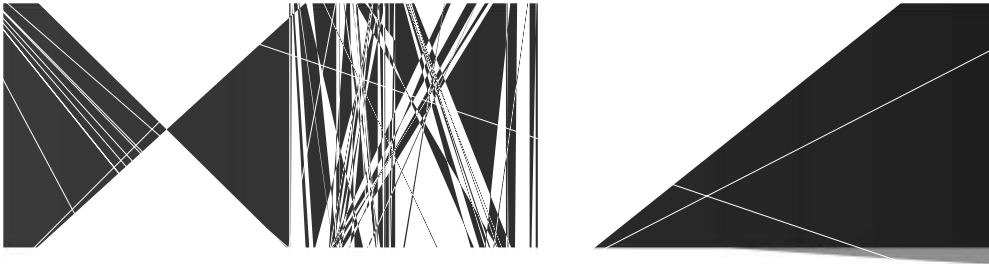
4.



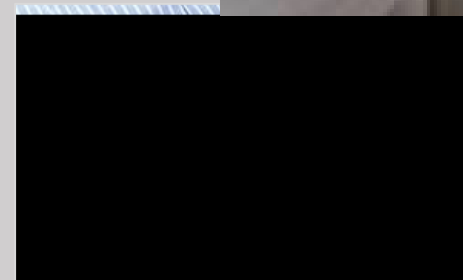
23901100

227807

189





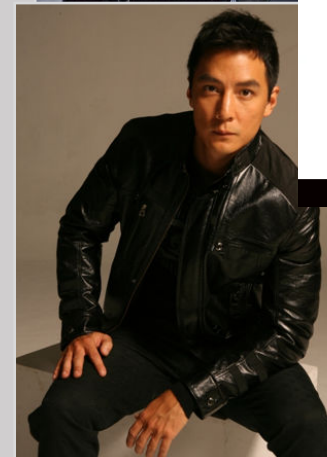
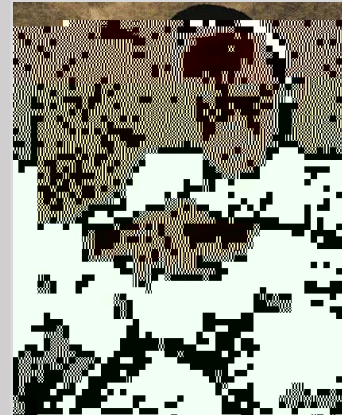


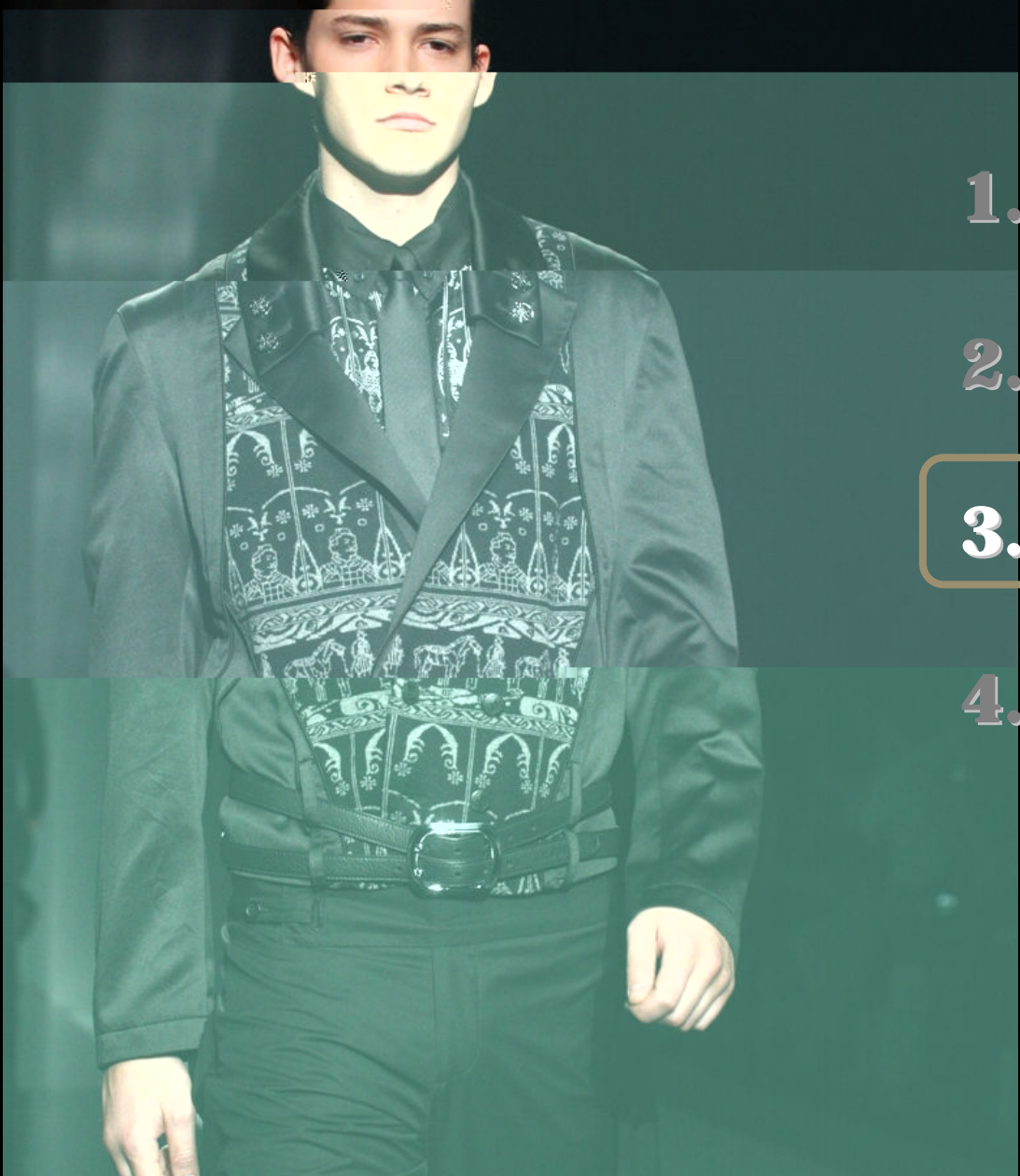


2008

2007—2008

2009



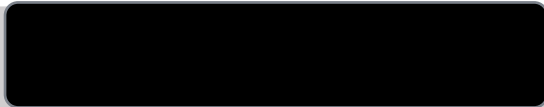


1.

2.

3.

4.



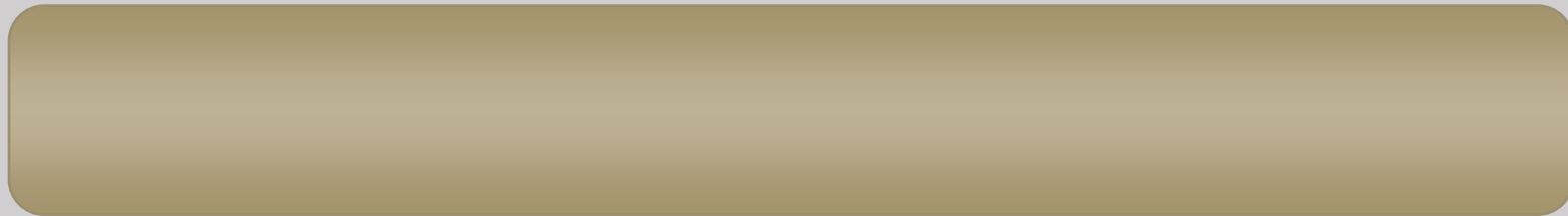
-
-



**Mr. Michelangelo Bombino
L2**

300-400





1.

2.

3.

4.

